

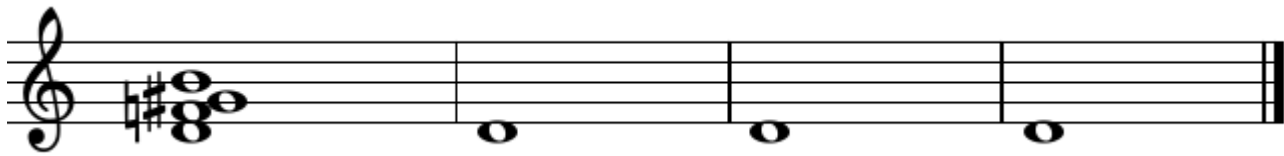
MUSIC 201

Assignment 1

Name: _____

Due August 31

1. Write the following chord as a fully-diminished **vii** in the keys marked bellow using enharmonic spellings when necessary (no secondary functions):



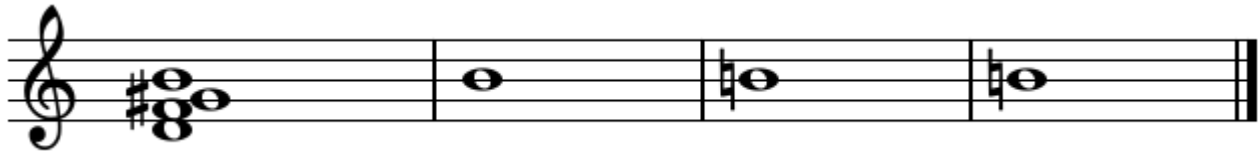
vii A F# Eb C

25 points

2. find eight more keys in which this chord can be encountered (no secondary functions):

(*Hint: do not change the spelling of the note on the staff*)

- as common-tone diminished chord with the ii root ($\#ii^{07}$ or ii+)



ii

25 points

- as common-tone diminished chord with the vi root ($\#vi^{07}$ or vi+)



vi

25 points

2. The following chord could be interpreted in four keys (no secondary functions):



Key
Function

Key
Function

Key
Function

Key
Function

25 points